

ULTRA SERIES

Strong, solid, stylish.
Velbon's patented leg system delivers high performance in a compact design.

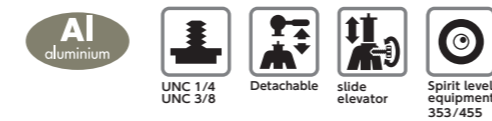


021

What's New!

ULTRA

ULTRA Series have new design body and new heads for D-SLR as well as Mirror less camera system.



ULTRA	353 mini Q	355	455	555(A)	655(A)	P-MAX
	47.20	152.00	162.00	155.80	153.60	—
cm / inch	18.58	59.84	63.78	61.34	60.47	—
	39.70	127.20	137.50	131.20	128.80	131.00
cm / inch	15.63	50.08	54.13	51.65	50.71	51.57
	13.50	17.7	21.00	13.20	12.40	37.00
cm / inch	5.31	6.97	8.27	5.20	4.88	14.57
	19.00	39.00	42.50	37.00	37.20	35.00
kg / lbs	7.48	15.35	16.73	14.57	14.65	13.78
	0.612	1.120	1.440	1.307	1.480	0.80
kg / lbs	1.35	2.47	3.17	2.88	3.26	1.76
	2.00	2.00	2.50	3.50	4.00	2.00
kg / lbs	4.41	4.41	5.51	7.72	8.82	4.41
	1.50	1.50	2.00	2.50	3.00	1.50
kg / lbs	3.31	3.31	4.41	5.51	6.61	3.31
	⑤ 21	⑤ 21	⑤ 24	⑤ 27	⑤ 30	⑤ 21
mm / inch	0.83	0.83	0.94	1.06	1.18	0.83
SPARE QUICK RELEASE PLATE	QB-42	QB-62	QB-42			QB-337

Maximum Height
472mm

Low position
135mm



Recommended Heads



PH-G40D
Height: 93.5mm/3.68inch
Weight: 450g/0.99lbs
UNC 1/4&3/8 tripod socket

PHD-33M
Height: 75.0mm/2.95inch
Weight: 293g/0.65lbs
UNC 1/4 tripod socket

QHD-33M
Height: 74.0mm/2.91inch
Weight: 147g/0.32lbs
UNC 1/4 tripod socket

QHD-53D
Height: 99.0mm/3.90inch
Weight: 300g/0.66lbs
UNC 1/4&3/8 tripod socket

QHD-63D
Height: 113.0mm/4.45inch
Weight: 349g/0.77lbs
UNC 1/4 & 3/8 tripod socket

022

ULTRA TR SERIES

The new TR series feature a detachable centre column elevator, 6-section legs and ball and socket heads.



023

What's New!

ULTRA TR

Recommended Heads



2 independent stopper knobs are the feature of the new head. One stopper for the horizontal panning for the panoramic shots. The other stopper is for multi angle position of the ball head. Adjusting tension of the ball is incorporated in the stopper knob. Use finger to rotate adjuster slightly to right or left to have ideal tension to move the ball.

ULTRA TR 463M 563D 663D

	463M	563D	663D
MAX	153.00	156.30	156.50
cm / inch	60.24	61.54	61.61
MIN	126.00	130.00	130.50
cm / inch	49.61	51.18	51.38
FLY	28.30	30.30	31.00
cm / inch	11.14	11.93	12.20
HEIGHT	28.00	28.80	29.80
cm / inch	11.02	11.34	11.61
WEIGHT	1.180	1.542	1.793
kg / lbs	2.60	3.40	3.95
MAXIMUM	3.00	3.50	4.00
Loading Weight	6.61	7.72	8.82
SUGGESTED	2.00	2.50	3.00
Loading Weight	4.41	5.51	6.61
SECTION	6	6	6
mm / inch	24	27	30
	0.94	1.06	1.18

SPARE QUICK RELEASE PLATE



QHD-S4M
Height: 43mm/1.69inch
Weight: 180g/0.40lbs
QRP(QB-42)



QHD-S5D
Height: 67mm/2.64inch
Weight: 327g/0.72lbs
DIN standard QRP(QB-62)



QHD-S6D
Height: 110mm/4.33inch
Weight: 360g/0.79lbs
DIN standard QRP(QB-62)



024

VS SERIES

Unique innovative design enables horizontal movement of geared center column for zooming in cinema/video mode. The VS Series.

The VS Series tripods present interesting possibilities thanks to the unique multifunction arm that can be rotated 360° when gripped. Directed upward, the VS tripod enables easy shooting of celestial bodies and fireworks. Turned downward, the VS Series facilitates macro work and the photography of high buildings from low angles. In horizontal movement, the legs of the tripod can be opened to the low position for zooming with cinema/video effects by extending the elevator. The tripod that expands photographic options through its multiple modes of use. Four-section legs, geared center column, ball head, and tripod case are standard. The V4 unit is recommended for users who want to use the arm alone on different tripod models. Diameter of head mounting screw is 1/4 inch. Head sold separately.



025

VS

V4 UNIT

The V4 unit is recommended for users who want to use the arm alone on different tripod models. Diameter of head mounting screw is 1/4 inch. Head sold separately.

AI aluminium
Fully Extended: 545mm/21.46inch
Fold Length: 340mm/13.39inch
Weight: 572g/1.26lbs UNC 1/4 inch screw
JAN/EAN 4907990 379467 UPC 017915 634046



VS 443D	AI aluminium
MAX 160.50 cm / inch	Spirit level equipment
140.50 cm / inch	QRP
23.50 cm / inch	UNC 1/4 or 3/8 inch
57.50 cm / inch	Detachable
22.64 kg / lbs	Gear elevator
1.84 kg / lbs	
3.50 kg / lbs	
7.72 kg / lbs	
3.00 kg (lbs)	
6.61 kg (lbs)	
Section 4 23 mm / inch	
0.91	
HEAD SCREW UNC 3/8 & 1/4	
SPARE QUICK RELEASE PLATE DIN QB-62/QB-145/QB-157K/QB-46	

VS series Size comparison

Model	Height (mm)	Height (inch)
VS-443D	1800	70.87
VS-443D	1600	62.99
VS-443D	1400	55.12
VS-443D	1200	47.24
VS-443D	1000	39.37
VS-443D	800	31.5
VS-443D	600	23.62
VS-443D Low position	400	15.75
VS-443D Low position	200	7.87



VS-443D
ATTACHED HEAD/
QHD-53D/QB-62



Elevator can be inverted to shoot close-ups from directly above (copy stand function) with camera positioned beneath the tripod.

ATTACHED HEAD



AI aluminium
QHD-53D DIN
Height: 99.0mm/3.90inch
Weight: 300g/0.66lbs
UNC 1/4 & 3/8 tripod socket



Angle Adapter 4

It is used between the head and V4 Unit boom-arm so that the head may be able to change angle to any degree to keep camera body leveling position manually.

Height: 48mm/1.87inch
Weight: 90g/0.2lbs UNC 3/8 & 1/4 inch screw

026

VIDEO SERIES

Usable with all video camera models and in all shooting conditions.

Velbon offers unique video heads in each segment of this tripod category. Smooth panning and tilting action while stopper screws are unlocked. Once the position is fixed, just release handle and lock stoppers with a soft touch. This will be enough to stop and move for panning and tilting. Velbon's fluid heads go with traditional aluminum tripods as well as EX or C-series bodies, depending on the purpose.



027

What's New!

VIDEO & Bird-watching

EX-447 VIDEO and 547 VIDEO N features new concept Video heads. Light weight and smooth action with fluid effect. Stopper Knobs are on the Left side of the heads and right hand can be used only for the operating pan-tilt handle. 4-section legs make the tripod size even compact and easy for carrying.

EX	447 VIDEO	547 VIDEO N
	155.00	160.00
cm / inch	61.02	62.99
	128.50	132.80
cm / inch	50.59	52.28
	48.50	51.70
cm / inch	19.09	20.35
	1.155	1.600
kg / lbs	2.55	3.53
	2.00	3.00
kg / lbs	4.41	6.61
	1.00	2.00
kg (lbs)	2.20	4.41
	4	4
mm / inch	20	23
	0.79	0.91
HEAD SCREW	UNC	UNC
	1/4 inch	1/4 inch

AI aluminium

Spirit level equipment

Quick Release Plate QB-32/46

UNC 1/4

Detachable

EX-447 VIDEO

Recommendation Heads

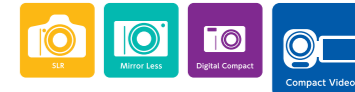


FHD-43M
Height: 75.00mm / 2.95inch
Weight: 285g / 0.63lbs
UNC 1/4 tripod socket



FHD-53D
Height: 84.00mm / 3.31inch
Weight: 495g / 1.09lbs
UNC 1/4 tripod socket

EX-447 VIDEO



Direction can be changed



Quick lever locking

Quick Release Plate **QB-32**
JAN/EAN 4907990 379788

Integrated pan and tilt stopper



Pan grip can be switched.

Geared crank handle

Elevator stopper

FLUID HEAD

Special fluid for ultra-smooth camera platform movement

EX-547 VIDEO N



Direction can be changed



Quick lever locking

Quick Release Plate **QB-46**
JAN/EAN 4907990 373908

Integrated pan and tilt stopper



Pan grip can be switched.

Geared crank handle

Elevator stopper

FLUID HEAD

Special fluid for ultra-smooth camera platform movement



EX-547 VIDEO N

028

VIDEO & Bird-watching

Recommended Heads



FHD-51QN AI aluminum

Height: 96mm/3.78inch
Weight: 635g/1.40lbs
UNC 1/4 inch tripod socket
Spare QRP: QB-F51

PH-368 AI aluminum

Height: 104mm/4.09inch
Weight: 640g/1.41lbs
UNC 1/4 inch tripod socket
Spare QRP: QB-6RL

FHD-61QN AI aluminum

Height: 106mm/4.17inch
Weight: 890g/1.96lbs
UNC 1/4 inch tripod socket
Spare QRP: QB-F51

FHD-65D MG magnesium

Height: 116mm/4.57inch
Weight: 940g/2.07lbs
1/4 inch tripod socket
QRP: QB-62 DIN



DV-7000N
ATTACHED HEAD/
PH-368/QB-6RL

SHERPA 6380D
ATTACHED HEAD/
FHD-65D/QB-62

Videomate 438
ATTACHED HEAD/
PH-248/QB-4L

Videomate 538
ATTACHED HEAD/
PH-358/QB-5RL

Videomate 638
ATTACHED HEAD/
PH-368/QB-6RL

VIDEO	DV-7000N	SHERPA 6380D	Videomate 438	Videomate 538	Videomate 638
MAX cm / inch	162.50 / 63.98	178.80 / 70.39	153.50 / 60.43	161.00 / 63.39	171.00 / 67.32
cm / inch	140.50 / 55.30	139.00 / 54.72	126.50 / 49.80	128.00 / 50.39	138.50 / 54.53
cm / inch	56.80 / 22.36	29.00 / 11.42	—	—	—
cm / inch	70.00 / 27.60	66.00 / 25.98	59.00 / 23.23	61.00 / 24.02	67.00 / 26.38
kg / lbs	3.37 / 7.43	2.66 / 5.86	1.23 / 2.71	1.63 / 3.60	1.98 / 4.37
Maximum Loading Weight kg / lbs	6.00 / 13.23	4.50 / 9.92	2.00 / 4.41	3.00 / 6.61	4.00 / 8.82
Suggested Loading Weight kg (lbs)	4.50 / 9.92	3.50 / 7.72	1.00 / 2.20	2.00 / 4.41	3.00 / 6.61
Section mm / inch	③ 29 / 1.14	③ 29 / 1.14	③ 20 / 0.79	③ 23 / 0.91	③ 26 / 1.02
SPARE QUICK RELEASE PLATE	QB-6RL	QB-62	QB-4L	QB-5RL	QB-6RL



• Videomate are fixed the heads. Not to be removed.

VIDEO series Size comparison (with elevator not extended)

1800(mm) / 70.87 (inch)	Videomate 538	DV-7000N	Videomate 638	SHERPA 6380D
1600/62.99				
1400/55.12				
1200/47.24				
1000/39.37				
800/31.5				
600/23.62				
400/15.75				
200/7.87				

Light color is the maximum height that raised the elevator.

SPT-1 (PAT.) (Lens supporter)

SPT-1 is compatible with the FHD-series head for sliding unit.
L: 245(9.65) x W: 70(2.76) x Height of center column 98(3.86)mm(inch)
Weight: 340g/0.75lbs
UNC 1/4 & 3/8 tripod socket



Light-weight and 2-section foldable dolly. Fits almost of all the tripod leg tops. Smooth wheels and stand-by function to stay there. Good for studio work especially with DV-7000N.

Dolly DL-11

Diameter of spread legs:
61cm-84cm / 24.02-33.07inch
Weight: 1.1kg/2.43lbs

JAN/EAN 4907990 200228
UPC 017915 844117



Velbon builds tripods of proven design with high quality standards for your everyday use.

EX
SERIES

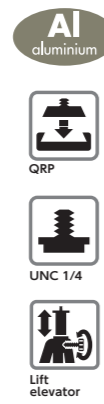
EX



• 2-Way Head (230/330/Mini), 3-Way Head with a Quick Release Plate (330Q/Macro) for Photo & Video.
 • Light weight, Slim 3-section legs (Mini/2-section legs).
 • Lift Elevator.
 • Speedy leg locking system.
 • Radial braces for secure set-up.
 • Leg Foot Rubber for steadiness on variety of ground conditions.
 • Tripod carrying case is included.



EX	323 Mini	Mini	Macro	230	330	330Q	344Q
MAX	41.20	41.70	56.30	122.00	145.50	146.00	155.00
cm / inch	16.22	16.42	22.17	48.03	57.28	57.48	61.02
MIN	35.50	36.00	50.60	94.70	114.50	115.00	127.70
cm / inch	13.95	14.17	19.92	37.28	45.08	45.28	50.28
Low position	18.20	19.00	20.30	—	—	—	—
cm / inch	7.17	7.48	7.99	—	—	—	—
Weight	25.70	25.50	28.10	43.50	50.60	50.60	47.00
kg / lbs	10.12	10.04	11.06	17.13	19.92	19.92	18.50
Load Capacity	392	467	578	744	828	865	953
g / lbs	0.86	1.03	1.27	1.64	1.83	1.91	2.10
Max. Load	2.00	2.50	2.50	2.00	2.00	2.00	2.00
kg / lbs	4.41	5.51	5.51	4.41	4.41	4.41	4.41
Suggested Load	1.50	1.50	1.50	1.00	1.00	1.00	1.00
kg (lbs)	3.31	3.31	3.31	2.20	2.20	2.20	2.20
Section	2	2	3	3	3	3	4
mm / inch	17	17	17	17	17	17	20
	0.67	0.67	0.67	0.67	0.67	0.67	0.79
SPARE QUICK RELEASE PLATE	UNC						
1/4 inch			QB-32			QB-32	QB-32



EX series Size comparison (with elevator not extended)

1800 (mm) / 70.87 (inch)	EX-330	EX-330Q	EX-344Q
1600/62.99			
1400/55.12			
1200/47.24			
1000/39.37			
800/31.5			
600/23.62	EX-323 Mini	EX-Mini	
400/15.75			
200/7.87			

031

EX

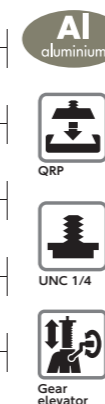
On EX 430 and higher, the camera plate turns to the right instead of left. This leaves left hand free to adjust tripod and camera controls while taking images in portrait mode. Importantly when using telephoto lenses the camera remains securely attached to plate due to effect of gravity tightening the screw connection.



From EX-430 through EX-640 All the heads are 3-way with Quick Release Plate & Friction Adjusting control. Elevator pole can be tightened and loosened with a quick turn.



EX	430	440 BLACK/BLUE/RED	888	530	540	630	640	CX-888 BLACK
MAX	151.00	153.00	153.00	156.00	156.00	168.00	170.00	145.00
cm / inch	59.45	60.24	60.24	61.42	61.42	66.14	66.93	57.09
MIN	124.70	126.70	126.70	124.20	129.50	134.80	142.80	121.00
cm / inch	49.09	49.88	49.88	48.90	50.98	53.07	56.22	47.64
Low position	56.00	47.00	48.50	57.00	49.00	61.50	53.50	48.00
cm / inch	22.05	18.50	19.09	22.44	19.29	24.21	21.06	18.90
Load Capacity	1.20	1.18	1.29	1.45	1.43	1.69	1.67	1.30
kg / lbs	2.65	2.60	2.84	3.20	3.15	3.73	3.68	2.87
Max. Load	2.00	2.00	3.00	4.00	4.00	5.00	5.00	2.50
kg / lbs	4.41	4.41	6.61	8.82	8.82	11.02	11.02	5.51
Suggested Load	1.00	1.00	1.50	2.00	2.00	3.00	3.00	1.50
kg (lbs)	2.20	2.20	3.31	4.41	4.41	6.61	6.61	3.31
Section	3	2	4	3	4	3	4	4
mm / inch	20	20	23	23	23	26	26	23
	0.79	0.79	0.91	0.91	0.91	1.02	1.02	0.91
SPARE QUICK RELEASE PLATE	QB-46	QB-46	QB-46	QB-46	QB-46	QB-46	QB-46	QB-4W
DIN	DIN	DIN	DIN	DIN	DIN	DIN	DIN	



EX series Size comparison (with elevator not extended)

1800 (mm) / 70.87 (inch)	CX-888 BLACK	EX-430	EX-440	EX-530	EX-888	EX-540	EX-630	EX-640
1600/62.99								
1400/55.12								
1200/47.24								
1000/39.37								
800/31.5								
600/23.62								
400/15.75								
200/7.87								

032

MONOPOD SERIES

Fast and steady for ready to shoot the pictures of moving objects such as sports or F-1. Various choices from light-weight carbon fiber legs till the compact ULTRA legs to fit in the backpack for the travels.

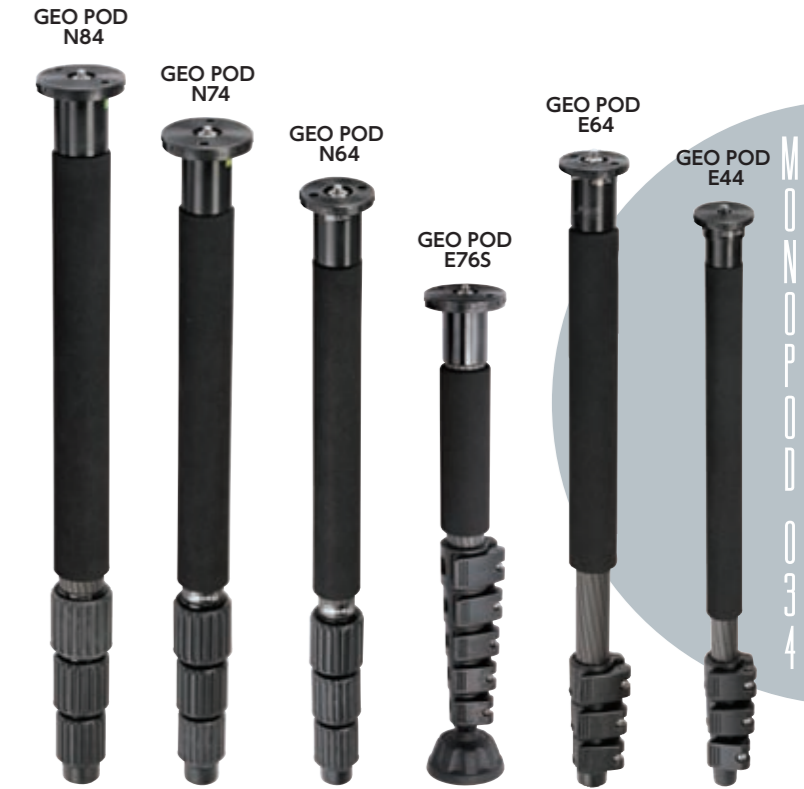
Some of the monopods contain the head together. It helps to change the angle for Vertical / portrait position. New Carbon monopod with 6-section legs becomes compact and features horse-shoe type leg top rubber.



What's New!



PRO GEO — New locking system V-Lock



- **ULTRA STICK SUPER 8**
Extension is just remarkable. Compact size just like an umbrella when folded, but extension will be your eye-level.
- **ULTRA SELFIE**
Will provide greater opportunity to take picture of yourself in the various situations. Ideal for Compact Camera system or action camera such as GoPro.

ULTRA SELFIE
TILTING HEAD THD-23
Maximum Height 725mm

ULTRA STICK SUPER 8
Maximum Height 1560mm



ULTRA	STICK SUPER 8	SELFIE
MAX	156.00	72.50
cm / inch	61.42	28.54
	26.00	18.50
cm / inch	10.24	7.28
	0.347	0.183
kg / lbs	0.77	0.40
Maximum Loading Weight	3.00	0.400
kg / lbs	6.61	0.88
Section	⑧ 30	⑥ 24
mm / inch	1.18	0.94
HEAD SCREW	UNC	UNC
	1/4 only	1/4 only



ULTRA STICK

ULTRA STICK SUPER 8
Folded size **260mm**



ULTRA SELFIE
Folded size **185mm**
THD-23
Height: 45mm/1.77inch
Weight: 32g/0.07lbs
1/4 inch tripod socket

MONOPOD	GEO POD V865	GEO POD V84	GEO POD V75	GEO POD V65	GEO POD N84	GEO POD N74	GEO POD N64	GEO POD E765	GEO POD E64	GEO POD E54	GEO POD E44
MAX	156.00	193.00	181.00	156.00	189.00	170.00	154.00	154.00	167.00	159.00	148.00
cm / inch	61.42	75.98	71.26	61.42	74.41	66.93	60.63	60.63	65.75	62.60	58.27
	42.50	60.50	50.20	45.00	59.50	54.50	49.50	42.50	53.20	51.00	48.20
cm / inch	16.73	23.82	19.76	17.72	23.43	21.46	19.49	16.73	20.94	20.08	18.98
	0.722	0.810	0.673	0.550	0.768	0.622	0.485	0.658	0.458	0.371	0.314
kg / lbs	1.59	1.79	1.48	1.21	1.69	1.37	1.07	1.45	1.01	0.82	0.69
Maximum Loading Weight	6.00	7.00	5.50	4.00	7.00	5.50	4.00	5.00	4.00	3.00	2.50
kg / lbs	13.23	15.43	12.13	8.82	15.43	12.13	8.82	11.02	8.82	6.61	5.51
Section	⑥ 36	④ 36	⑤ 32	⑤ 28	④ 36	④ 32	④ 28	⑥ 32	④ 28	④ 25	④ 22
mm / inch	1.42	1.42	1.26	1.10	1.42	1.26	1.10	1.26	1.10	0.98	0.87
HEAD SCREW	UNC	UNC	UNC	UNC	UNC	UNC	UNC	UNC	UNC	UNC	UNC
	1/4 & 3/8	1/4 & 3/8	1/4 & 3/8	1/4 & 3/8	3/8 only	3/8 only	1/4 & 3/8	1/4 & 3/8	1/4 & 3/8	1/4 only	1/4 only

MONOPOD



Do not attempt to use as a walking stick especially with Ultra Stick monopods.

MONOPOD	ULTRA STICK M50N	ULTRA STICK M53Q	ULTRA STICK L60	ULTRA STICK V60	ULTRA STICK R60	EXUP-300	EXUP-53	RUP-L40	RUP-L43II	RUP-V40	RUP-V43D	UP-400	UP-400DX
MAX	132.00	138.00	155.00	155.00	155.00	132.00	149.50	158.40	166.50	169.00	179.00	160.00	169.00
cm / inch	51.97	54.33	61.02	61.02	61.02	51.97	58.86	62.36	65.55	66.54	70.47	62.99	66.54
	31.70	37.00	31.40	31.60	32.20	40.60	44.00	48.60	52.50	52.00	58.50	51.00	57.00
cm / inch	12.48	14.57	12.36	12.44	12.68	15.98	17.32	19.13	20.67	20.47	23.03	20.08	22.44
	0.212	0.360	0.275	0.307	0.368	0.218	0.360	0.468	0.470	0.730	0.390	0.750	
kg / lbs	0.47	0.79	0.61	0.68	0.81	0.48	0.79	1.03	1.04	1.61	0.86	1.65	
	1.50	1.50	2.00	2.50	3.00	1.50	2.00	2.00	2.00	3.00	1.50	1.50	
Maximum Loading Weight	3.31	3.31	4.41	5.51	6.61	3.31	4.41	4.41	4.41	6.61	3.31	3.31	
	5	5	6	6	6	4	5	4	4	4	4	4	
mm / inch	21	21	24	27	30	20	20	26	26	29	29	27	27
	0.83	0.83	0.94	1.06	1.18	0.79	0.79	1.02	1.02	1.14	1.14	1.06	1.06
	UNC	QB-3B	UNC	UNC	UNC	UNC	UNC	UNC	UNC	UNC	QB-62	UNC	QB-4L
HEAD SCREW	1/4 only	1/4 only	1/4 only	1/4 only	1/4 only	1/4 only	1/4 only	1/4 only	1/4 only	1/4 only	DIN	1/4 only	1/4 only

ULTRA mini II

POLE POD II

4-section monopod stands alone on the 2-section mini tripod. Ball head QHD-33Q is used for the monopod as well as table-top tripod (ULTRA mini II)

- Fully extended: 1790mm / 70.47inch
- Folded length: 680mm / 26.77inch
- Diameter of pipe (pole): 29mm / 1.14inch
- Diameter of pipe (legs): 21mm / 0.83inch
- Sections of pole/legs: 4/2
- Net weight: 980g / 2.16lbs
- Maximum Loading Weight: 2500g / 5.51lbs
- Recommended Loading Weight: 1500g / 3.31lbs
- Recommended head & head screw: QHD-33Q / Head screw UNC 1/4 only.
- Carrying Case: Included

JAN/EAN 4907990 372369
UPC 017915 842021



HEADS

PANHEAD (PHOTO)

•Lightweight, but rigid photo head with 2-handles, made from magnesium alloy.

Unique idea and design concept in PHD-66Q Revolver Head. This will be for D-SLR users who own even bigger lenses to use on the tripod or monopod. When need to shift the angle to the vertical position, the unique function will be very much convenient. Patent Pending.



PH-275

Height: 158mm/6.22inch
Weight: 1100g/2.43lbs
Camera screw 1/4 & 3/8 inch
Tripod screw socket 3/8 inch
JAN/EAN 4907990 271587
UPC 017915 812758



PH-285

Height: 186mm/7.32inch
Weight: 1500g/3.31lbs
Camera screw 1/4 & 3/8 inch
Tripod mounting screw 1/4inch & 3/8inch
JAN/EAN 4907990 471703
UPC 017915 888036



PHD-66Q

Height: 125mm/4.92inch
Height in vertical position 170mm/6.69inch
Weight: 650g/1.43lbs
QUICK RELEASE PLATE : QB-635II
3/8 & 1/4 inch tripod screw
JAN/EAN 4907990 481924
UPC 017915 851665



PHD-65D

Height: 120mm/4.72inch
Weight: 540g/1.19lbs
Tripod mounting screw 1/4inch & 3/8inch
JAN/EAN 4907990 481900
UPC 017915 850651



PHD-64Q

Height: 134mm/5.28inch
Weight: 810g/1.79lbs
Tripod mounting screw 1/4inch & 3/8inch
JAN/EAN 4907990 282088
UPC 017915 850644



PHD-55D

Height: 109mm/4.29inch
Weight: 450g/0.99lbs
Tripod mounting screw 1/4inch & 3/8inch
JAN/EAN 4907990 481887
UPC 017915 850552

PANHEAD (PHOTO)

•3-way(4-Way) heads made of aluminum, 2-handles or single handle.



PH-157Q BK

Height: 105mm/4.13inch
Weight: 570g/1.26lbs
3/8 inch tripod socket
1/4 inch tripod screw
JAN/EAN 4907990 207135
UPC 017915 831605



PHD-52Q

Height: 119mm/4.69inch
Weight: 530g/1.17lbs
1/4 inch tripod socket
JAN/EAN 4907990 282002
UPC 017915 850521



PHD-33M

Height: 74mm/2.91inch
Weight: 293g/0.65lbs
1/4 inch tripod screw
JAN/EAN 4907990 470492
UPC 017915 850330



THD-23

Height: 45mm/1.77inch
Weight: 32g/0.07lbs
1/4 inch tripod socket
JAN/EAN 4907990 383624
UPC 017915 891005

BALL HEADS

•Free angle adjusting and locking by one-action. •But for the QHD-S6D, S5D and S4M feature 2 stopper knobs for Panorama photos. •QHD-65D has 3-stopper knobs for Tilting, Panning and Vertical position independently. •Tripod Screw Socket 1/4 & 3/8 inch.



QHD-73Q

Height: 120mm/4.72inch
Weight: 490g/1.08lbs
JAN/EAN 4907990 471727
UPC 017915 856738



QHD-63Q

Height: 110mm/4.33inch
Weight: 360g/0.79lbs
JAN/EAN 4907990 471802
UPC 017915 856639



QHD-63D

Height: 113mm/4.45inch
Weight: 349g/0.77lbs
JAN/EAN 4907990 471789
UPC 017915 856677



QHD-53D

Height: 99.0mm/3.90inch
Weight: 300g/0.66lbs
JAN/EAN 4907990 179883
UPC 017915 856530



QHD-43D

Height: 92mm/3.62inch
Weight: 265g/0.58lbs
JAN/EAN 4907990 379863
UPC 017915 856431



QHD-33Q

Height: 69mm/2.72inch
Weight: 150g/0.33lbs
JAN/EAN 4907990 471864
UPC 017915 856332



QHD-S6D

Height: 110mm/4.33inch
Weight: 360g/0.79lbs
DIN Quick release plate (QB-62)
JAN/EAN 4907990 271624
UPC 017915 858060



QHD-S5D

Height: 100mm/3.94inch
Weight: 320g/0.71lbs
DIN Quick release plate (QB-62)
JAN/EAN 4907990 271631
UPC 017915 858053



QHD-S4M

Height: 85mm/3.35inch
Weight: 175g/0.39lbs
Quick release plate (QB-42)
1/4 inch tripod socket
JAN/EAN 4907990 271679
UPC 017915 858046



QHD-65D

Height: 114mm/4.49inch
Weight: 512g/1.13lbs
JAN/EAN 4907990 475145
UPC 017915 856653

FLUID HEADS

•Heavy Duty Fluid heads made of Aluminum are featured with Sliding Plate. •FHD-65D has 3-way movements for Tilting, Panning and Vertical position. •FHD-53D,43M features Locking knobs for panning and Tilting at the left side of the head in the same part.



FHD-71QN

Height: 115mm/4.53inch
Weight: 1130g/2.49lbs
1/4 inch tripod socket
JAN/EAN 4907990 470188
UPC 017915 870703



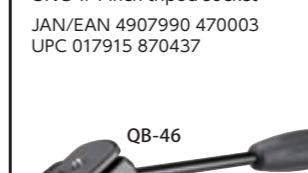
FHD-65D

Height: 116mm/4.57inch
Weight: 940g/2.07lbs
1/4 inch tripod socket
JAN/EAN 4907990 470164
UPC 017915 870659



FHD-61QN

Height: 106mm/4.17inch
Weight: 890g/1.96lbs
1/4 inch tripod socket
JAN/EAN 4907990 470126
UPC 017915 870604



FHD-43M

Height: 75.0mm/2.55inch
Weight: 285g/0.63lbs
UNC 1/4 inch tripod socket
JAN/EAN 4907990 470003
UPC 017915 870437



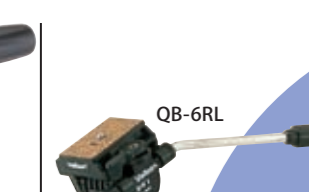
FHD-51QN

Height: 96mm/3.78inch
Weight: 635g/1.40lbs
1/4 inch tripod socket
JAN/EAN 4907990 470065
UPC 017915 870505



FHD-53D

Height: 84.0mm/5.31inch
Weight: 495g/1.09lbs
UNC 1/4 inch tripod socket
JAN/EAN 4907990 470201
UPC 017915 870536



PH-368

Height: 104mm/4.09inch
Weight: 640g/1.41lbs
1/4 inch tripod socket
Spare Quick release plate: QB-6RL
JAN/EAN 4907990 207227
UPC 017915 823686



PH-358

Height: 98mm/3.86inch
Weight: 530g/1.17lbs
1/4 inch tripod socket
Spare Quick release plate: QB-5RL
JAN/EAN 4907990 207265
UPC 017915 823587



PH-248

Height: 82mm/3.23inch
Weight: 340g/0.75lbs
1/4 inch tripod socket
Spare Quick release plate: QB-4L
JAN/EAN 4907990 471307
UPC 017915 823587

QRA/QB QUICK RELEASE ADAPTER (QRA)

● 1/4 inch Camera Screw



DIN

Size of the standard base of quick release plates – 42mm x 42mm. Since the base is square, the user can choose the direction of the plate according to the camera and lens. As long as the base is the standard DIN size, quick release plates are interchangeable.



QRA-635LII
JAN/EAN 4907990 474322
UPC 017915 888104



QB-635L(B)
JAN/EAN 4907990 274441
UPC 017915 888067



QRA-5
JAN/EAN 4907990 408501
UPC 017915 883000



QB-32
JAN/EAN 4907990 379788
UPC 017915 910119



QB-42
JAN/EAN 4907990 379795
UPC 017915 881426



QB-46
JAN/EAN 4907990 373908
UPC 017915 881471



QB-62
Spare Quick release plate
JAN/EAN 4907990 379801
UPC 017915 886629



QRA-4
JAN/EAN 4907990 408594
UPC 017915 883406



QRA-3 Black
JAN/EAN 4907990 474162
UPC 017915 883314



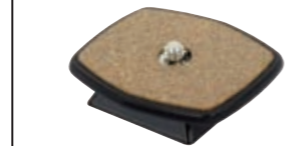
QB-3 Black
JAN/EAN 4907990 209399
UPC 017915 910102



QB-4W
JAN/EAN 4907990 209061
UPC 017915 881303



QB-337
JAN/EAN 4907990 409805
UPC 017915 881594



QB-157K
JAN/EAN 4907990 208996
UPC 017915 881563



QB-6RL
JAN/EAN 4907990 209085
UPC 017915 882805



QB-5RL
JAN/EAN 4907990 209108
UPC 017915 881808



QB-4L
JAN/EAN 4907990 209122
UPC 017915 881105



QB-F51
Spare Quick Release Plate for
FHD-71QN, 61QN, 51QN, 41QN
JAN/EAN 4907990 475671
UPC 017915 882904



QB-F51L (Long type)
Optional Quick Release Plate for
FHD-71QN, 61QN, 51QN, 41QN
JAN/EAN 4907990 475701
UPC 017915 882911

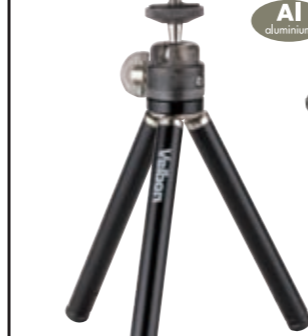
QUICK RELEASE PLATES

QB-4L	VIDEOMATE 438	UP-400DX	PH-248
QB-5RL	VIDEOMATE 538	PH-358	
QB-6RL	VIDEOMATE 638	DV-7000, DV-7000N	PH-368
QB-4W	CX-888		
QB-46	EX-430, EX-440, EX-888, EX-530, EX-540		
DIN	EX-630, EX-640	EX-547 VIDEO N	SUB-65
	FHD-53D		

QB-42	ULTRA 353mini, ULTRA 355	QHD-33M	
DIN	PHD-33M	QRA-4	FHD-43M EX-447 VIDEO
QB-32	EX-Macro, EX-330Q, EX-344Q		
QB-157	SHERPA 200R, 4370D, 5370D, 5470D		
DIN	PH-157Q	ULTRA LUXI.LIV	G5300D, E5300D, E4300D
QB-62	SHERPA 4350D, 4330D, 5350D, 5430D, 6350D, 6430D, 6380D	VS-443D	UT-43DII,
DIN			

QB-635L(B)	QRA-635LII Mg	PHD-64Q	UT-63Q
QB-3B	QHD-33Q	POLE POD II	QRA-3
		UT-43Q	

OTHERS TABLE POD ACCESSORIES



MINI-II
2-section table tripod for compact digital cameras. Includes tripod pouch with belt loop. Metallic black color.

MAX	cm / inch	cm / inch	cm / inch	kg / lbs
	21.50	14.60	15.00	0.11
	8.46	5.86	5.90	0.23

Maximum Loading Weight	Suggested Loading Weight	Section
kg / lbs	kg / lbs	mm / inch
0.80	0.40	10
1.76	0.88	0.39

Teeny Pod II
Tiny and bendy table tripod for compact digital cameras. Slips into your pocket. Black only. Height: 12.90mm/5.07inch Weight: 105g/0.23lbs



Super Mag Slider
For macro photography, for finely adjusting the frame forward and back, left and right. Upper unit for forward and back can be detached to use separately.
L: 210(8.27) x W: 120(4.72) x H: 70(2.76) mm(inch) Maximum adjustment:
Forward/back: 60mm/2.36inch
Left/right: 30mm/1.18inch
Weight: 470g/1.04lbs
UNC 1/4 & 3/8 tripod socket
JAN/EAN 4907990 273253
UPC 017915 884052

Super Mag Slider (Upper)
Only the Upper part from the Super Mag Slider to be used for moving forward or back. Light-weight made of Magnesium alloy.
L: 210(8.27) x W: 120(4.72) x H: 45(1.77) mm(inch) Maximum adjustment:
Forward/back: 60mm/2.36inch
Weight: 282g/0.62lbs
JAN/EAN 4907990 473271
UPC 017915 884076

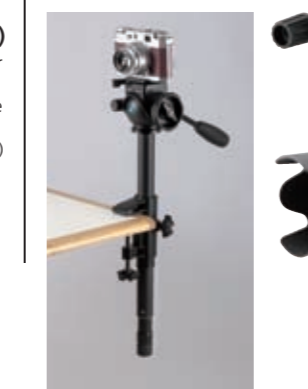


Super Mag Plate II
Twin camera plate for stereo photography. Screw positions are adjustable for camera location.
L: 440(17.32) x W: 58(2.28) x H: 27(1.06)mm(inch)
Weight: 712g/1.58lbs
UNC 1/4 & 3/8 tripod socket
JAN/EAN 4907990 473387
UPC 017915 884786

HIDE Clamp II
With the center column from the tripod elevator, use as independent unit for multi purpose of locking at the branch, table, chair or bar for clamping instantly. 4 kinds of sleeve are contained to fit any size of the center column of the tripods.



● Dark gray 21/22mm
● Light gray 23/24mm ● White 25/26mm
● Black 27/28mm
JAN/EAN 4907990 410047
UPC 017915 884830
Clamp Kit/Includes a center column as independent unit with the Hide Clamp.
JAN/EAN 4907990 273248
UPC 017915 884823



Angle Changer D
Table top multi Angle Changer from Vertical to standard for Macro and face up of your camera. Stability and compatibility of the base to fit on the tripod head like an adapter unit.
L: 145(5.77) x W: 80(3.15) x Folded H: 55(2.17)mm(inch) Maxi H: 140mm (5.51inch) Weight: 472g/1.04lbs
Quick Release Plate is DIN standard(QB-62).
UNC 1/4 inch screw
JAN/EAN 4907990 473462
UPC 017915 890039



SPT-1 (PAT.) (Lens supporter)
L: 245(9.65) x W: 70(2.76) x Height of center column 98(3.86)mm(inch)
Weight: 340g/0.75lbs
Adaptable for FHD-71QN, 61QN, 51QN, 41QN
UNC 1/4 & 3/8 tripod socket
JAN/EAN 4907990 389800
UPC 017915 884809



● Clamp size
L: 230(9.06) x W: 100(3.94) x H: 98(3.86) mm(inch) Weight: 200g/0.44lbs
● Umbrella size
Diameter: 900mm/35.4inch
Depth: 200mm/7.87inch
Shaft diameter: 10mm/0.39inch
Length of the Shaft: 530mm/20.9inch
Weight: 190g/0.42lbs
JAN/EAN 4907990 408570
UPC 017915 910126

Precision Leveler
More precise level is necessary for movie and panorama shots. Use between head and tripod to adjust on uneven terrain precisely.
H: 45(1.77)mm(inch)
Weight: 270g/0.6lbs
PEDESTAL DIAMETER: 51.6(2.03)mm (inch) UNC 1/4 inch screw
JAN/EAN 4907990 408464
UPC 017915 811003



Angle Adapter 4
It is used between the head and V4 Unit boom-arm so that the head may be able to change angle to any degree to keep camera body leveling position manually.
Height: 48mm/1.57inch
Weight: 90g/0.2lbs
UNC 3/8 & 1/4 inch screw
JAN/EAN 4907990 473486
UPC 017915 890015



PANAMATIC
Use software for stitching panorama shots. Rotates 30 degrees with each click for taking panoramic photos.
L: 100(3.94) x W: 45(1.77) x H: 10(0.39)mm(inch)
Weight: 50g/0.11lbs
UNC 1/4 & 3/8 tripod socket
JAN/EAN 4907990 410788
UPC 017915 950009

CASE #700
L: 680(26.77) x W: 125(4.92) x D: 90(3.54)mm
JAN/EAN 4907990 207463



Velbon Tripod/Monopod/Table pod Specifications ①

PAGE	ITEM NAME	MAX cm/inch	cm/inch	cm/inch	cm/inch	kg/lbs	Maximum Loading Weight kg/lbs	Suggested Loading Weight kg/lbs	DIAMETER & SECTION mm/inch	HEAD	SPARE QUICK RELEASE or Head screw	JAN / EAN CODE	UPC CODE	
006	PRO GEO V630	171.00 / 67.32	128.70 / 50.67	12.70 / 5.00	56.00 / 20.05	1.596 / 3.52	6.00 / 13.23	4.00 / 8.80	28 / 1.10 3		UNC 1/4 & 3/8 inch	4907990 441485	017915 570634	
006	PRO GEO V640	150.50 / 59.25	118.20 / 46.54	10.50 / 4.13	43.50 / 17.13	1.552 / 3.42	6.00 / 13.23	4.00 / 8.80	28 / 1.10 3		UNC 1/4 & 3/8 inch	4907990 441508	017915 570641	
GEO SERIES	GEO N535D(A)	169.00 / 66.54	128.00 / 50.39	17.00 / 6.69	56.50 / 22.24	1.358 / 2.99	8.00 / 17.64	3.00 / 6.61	25 / 0.98 3			4907990 441430	017915 535367	
	GEO N543D(A)	157.80 / 62.13	125.80 / 49.53	14.70 / 5.79	46.50 / 18.31	1.365 / 3.01	8.00 / 17.64	3.00 / 6.61	25 / 0.98 4			4907990 441454	017915 535442	
	GEO N635D(A)	176.40 / 69.45	134.00 / 52.76	12.70 / 5.00	58.60 / 23.07	1.637 / 3.61	10.00 / 22.05	4.00 / 8.82	28 / 1.10 3			4907990 441393	017915 536364	
	GEO N643D(A)	158.00 / 62.20	125.50 / 49.41	11.00 / 4.33	46.60 / 18.35	1.618 / 3.57	10.00 / 22.05	4.00 / 8.82	28 / 1.10 4			4907990 441416	017915 536449	
	GEO E535D(A)	171.50 / 67.52	130.50 / 51.38	17.50 / 6.89	56.50 / 22.24	1.286 / 2.84	8.00 / 17.64	3.00 / 6.61	25 / 0.98 3			4907990 443113	017915 545366	
	GEO E543D(A)	157.50 / 62.01	126.50 / 49.80	15.00 / 5.91	45.60 / 17.95	1.279 / 2.82	8.00 / 17.64	3.00 / 6.61	25 / 0.98 4			4907990 443137	017915 545441	
	GEO E635D(A)	170.60 / 67.17	130.20 / 51.26	12.60 / 4.96	56.50 / 22.24	1.503 / 3.31	10.00 / 22.05	4.00 / 8.82	28 / 1.10 3			4907990 443076	017915 546363	
	GEO E643D(A)	156.60 / 61.65	126.10 / 49.65	11.00 / 4.33	56.00 / 22.05	1.479 / 3.26	10.00 / 22.05	4.00 / 8.82	28 / 1.10 4			4907990 443090	017915 546448	
	GEO N830	200.00 / 78.74	179.00 / 70.47	35.00 / 13.78	81.70 / 32.17	3.310 / 7.30	14.00 / 30.86	9.00 / 19.84	36 / 1.40 3		3/8 inch		4907990 440938	017915 538306
	GEO N840	201.00 / 79.13	180.00 / 70.87	35.00 / 13.78	68.50 / 26.97	3.320 / 7.32	14.00 / 30.86	9.00 / 19.84	36 / 1.40 4		3/8 inch		4907990 440952	017915 538405
GEO N730	191.00 / 75.20	155.00 / 61.02	16.70 / 6.57	70.00 / 27.56	2.490 / 5.49	12.00 / 26.46	7.00 / 15.43	32 / 1.30 3		3/8 inch		4907990 440990	017915 537309	
GEO N740	173.00 / 68.11	146.00 / 57.48	14.00 / 5.51	55.80 / 21.97	2.31 / 5.09	12.00 / 26.46	7.00 / 15.43	32 / 1.30 4		3/8 inch		4907990 441010	017915 537408	
3000 SERIES (Ø20mm LEG) / 4000 SERIES (Ø23mm LEG)														
012	SHERPA 3430Q	159.00 / 62.60	129.50 / 50.98	18.70 / 7.36	47.50 / 18.70	1.027 / 2.26	2.50 / 5.51	1.50 / 3.31	20 / 0.79 4		QHD-33Q QB-3B	4907990 204189	017915 413436	
012	SHERPA 4350D	161.00 / 63.39	129.40 / 50.94	24.20 / 9.53	58.50 / 23.03	1.514 / 3.34	3.50 / 7.72	2.50 / 5.51	23 / 0.91 3		PH-G40D QB-62 DIN	4907990 433626	017915 443501	
012	SHERPA 4370D	163.30 / 64.29	132.30 / 52.09	25.80 / 10.16	60.30 / 23.74	1.565 / 3.45	3.50 / 7.72	2.50 / 5.51	23 / 0.91 3		PH-157Q QB-157 DIN	4907990 433640	017915 443709	
012	SHERPA 4430D	151.90 / 59.80	127.30 / 50.12	22.20 / 8.74	47.50 / 18.70	1.299 / 2.86	3.50 / 7.72	2.50 / 5.51	23 / 0.91 4		QHD-43D QB-62 DIN	4907990 433644	017915 444300	
5000 SERIES (Ø26mm LEG)														
013	SHERPA 5350D	169.80 / 66.85	135.30 / 53.27	28.00 / 11.02	62.00 / 24.41	1.926 / 4.25	4.00 / 8.82	3.00 / 6.61	26 / 1.02 3		PH-G50D QB-62 DIN	4907990 433701	017915 453500	
013	SHERPA 5370D	170.00 / 66.93	135.30 / 53.27	28.20 / 11.10	63.00 / 24.80	1.961 / 4.32	4.00 / 8.82	3.00 / 6.61	26 / 1.02 3		PH-157Q QB-157 DIN	4907990 433725	017915 453708	
013	SHERPA 5430D	157.00 / 61.81	131.00 / 51.57	24.90 / 9.80	51.00 / 20.08	1.633 / 3.60	4.00 / 8.82	3.00 / 6.61	26 / 1.02 4		QHD-53D QB-62 DIN	4907990 433763	017915 454309	
013	SHERPA 5470D	157.60 / 62.05	131.60 / 51.81	25.50 / 10.04	52.40 / 20.63	1.961 / 4.32	4.00 / 8.82	3.00 / 6.61	26 / 1.02 4		PH-157QK QB-157 DIN	4907990 433787	017915 454705	
6000 SERIES (Ø29mm LEG)														
014	SHERPA 6350D	179.00 / 70.47	139.50 / 54.92	29.70 / 11.69	67.00 / 26.38	2.27 / 5.01	4.50 / 9.92	3.50 / 7.72	29 / 1.14 3		PHD-65D QB-62 DIN	4907990 402127	017915 463509	
014	SHERPA 6380D	178.80 / 70.39	139.00 / 54.72	29.00 / 11.42	66.00 / 25.98	2.66 / 5.86	4.50 / 9.92	3.50 / 7.72	29 / 1.14 3		FHD-65D QB-157 DIN	4907990 403681	017915 463806	
014	SHERPA 6430D	163.00 / 64.17	133.50 / 52.56	25.20 / 9.92	53.00 / 20.87	2.01 / 4.43	4.50 / 9.92	3.50 / 7.72	29 / 1.14 4		QHD-63D QB-62 DIN	4907990 402141	017915 464308	
Geared elevator & Fixed angle														
015	SHERPA G5300D	147.00 / 57.87	125.00 / 49.21	34.00 / 13.39	55.50 / 21.85	1.62 / 3.58	4.00 / 8.82	3.00 / 6.61	26 / 1.02 3		PH-157Q QB-157 DIN	4907990 202987	017915 453029	
015	SHERPA G6300D(A)	151.00 / 59.45	128.60 / 50.63	36.00 / 14.17	57.00 / 22.44	1.92 / 4.24	4.50 / 9.92	3.50 / 7.72	29 / 1.14 3			4907990 203090	017915 463028	
015	MARK-7B(A)	165.50 / 65.16	158.70 / 62.48	45.50 / 17.91	67.50 / 26.57	5.15 / 11.35	12.0 / 26.46	7.00 / 15.43	32 / 1.26 3		3/8 inch	4907990 311887	017915 500778	
Slide elevator & Fixed angle														
016	SHERPA E3300Q	174.00 / 68.50	133.00 / 52.36		58.00 / 22.83	1.196 / 0.00	2.50 / 5.51	2.00 / 4.41	20 / 0.79 3		PHD-33M QB-42 DIN	4907990 400208	017915 433007	
016	SHERPA E4300D	168.30 / 66.26	132.20 / 51.97		60.20 / 23.70	1.716 / 3.78	3.00 / 6.61	2.00 / 4.41	23 / 0.91 3		PH-157Q QB-157 DIN	4907990 211187	017915 443006	
016	SHERPA E5300D	173.00 / 68.11	135.40 / 53.31		63.20 / 24.88	2.042 / 4.50	3.50 / 7.72	2.50 / 5.51	26 / 1.02 3		PH-157Q QB-157 DIN	4907990 211200	017915 453005	
016	SHERPA E6300D(A)	167.90 / 66.10	128.00 / 50.39		55.60 / 21.89	1.77 / 3.90	4.50 / 9.92	3.50 / 7.72	29 / 1.14 3			4907990 211231	017915 463011	
016	SHERPA 200R	167.50 / 65.94	137.50 / 54.10		62.00 / 24.41	1.95 / 4.30	4.00 / 8.82	3.00 / 6.61	26 / 1.02 3		PH-157Q QB-157 DIN	4907990 200877	017915 412002	

Velbon Tripod/Monopod/Table pod Specifications ②

PAGE	ITEM NAME	MAX cm/inch	cm/inch	cm/inch	cm/inch	kg/lbs	Maximum Loading Weight kg/lbs	Suggested Loading Weight kg/lbs	DIAMETER & SECTION mm/inch	HEAD	SPARE QUICK RELEASE or Head screw	JAN / EAN CODE	UPC CODE	
SUB	018 SUB-65	161.00 / 63.39	131.00 / 51.57	46.00 / 18.11	53.50 / 21.06	2.60 / 3.99	4.50 / 9.92	3.50 / 7.72	29 / 1.14 4	FHD-53D	QB-46 DIN	4907990 210623	017915 430655	
	UT SERIES	020 UT 43Q	155.00 / 61.02	138.80 / 54.65	33.60 / 13.23	27.20 / 10.71	1.074 / 2.37	2.50 / 5.51	2.00 / 4.41	24 / 0.94 6	QHD-U4Q	QB-3B	4907990 324740	017915 930445
		020 UT 43DII	155.80 / 61.34	139.60 / 54.96	34.20 / 13.46	28.90 / 11.38	1.146 / 2.53	3.50 / 7.72	3.00 / 6.61	24 / 0.94 6	QHD-43D	QB-62 DIN	4907990 424648	017915 930469
		020 UT 43DII (GX)	155.80 / 61.34	139.60 / 54.96	34.20 / 13.46	28.90 / 11.38	1.146 / 2.53	3.50 / 7.72	3.00 / 6.61	24 / 0.94 6	QHD-43D	QB-62 DIN	4907990 324566	017915 930476
		020 UT 53D	155.30 / 61.14	139.60 / 54.96	35.10 / 13.82	29.80 / 11.73	1.349 / 2.97	4.00 / 8.82	3.00 / 6.61	27 / 1.06 6	QHD-53D	QB-62 DIN	4907990 424624	017915 930537
		020 UT 63D	156.90 / 61.77	142.90 / 56.26	34.40 / 13.54	30.50 / 12.01	1.571 / 3.46	5.00 / 11.02	5.00 / 11.02	30 / 1.18 6	QHD-63D	QB-62 DIN	4907990 424600	017915 930636
		020 UT 63Q	151.00 / 59.45	136.20 / 53.62	33.40 / 13.15	27.80 / 10.94	1.59 / 3.51	6.00 / 13.23	3.00 / 6.61	30 / 1.18 6	QHD-63Q	QB-62 DIN	4907990 324689	017915 930643
	020 UT 45L	156.50 / 71.06	138.80 / 54.6	29.50 / 11.61	29.00 / 11.42	1.23 / 2.71	3.00 / 6.61	2.00 / 4.41	24 / 0.94 6	PHD-42Q	QB-62 DIN	4907990 131904	017915 930452	
	ULTRA SERIES	022 ULTRA 353 mini Q	47.20 / 18.58	39.70 / 15.63	13.50 / 5.31	19.00 / 7.48	0.612 / 1.35	2.00 / 4.41	1.50 / 3.31	21 / 0.83 5	QHD-33M	QB-42	4907990 212788	017915 903531
		022 ULTRA 355	152.00 / 59.84	127.20 / 50.08	17.70 / 6.97	39.00 / 15.35	1.120 / 2.47	2.00 / 4.41	1.50 / 3.31	21 / 0.83 5	PHD-33M	QB-42	4907990 415805	017915 903555
022 ULTRA 455		162.00 / 63.78	137.50 / 54.13	21.00 / 8.27	42.50 / 16.73	1.440 / 3.17	2.50 / 5.51	2.00 / 4.41	24 / 0.94 5	PH-G40D	QB-62 DIN	4907990 412584	017915 904552	
022 ULTRA 555(A)		155.80 / 61.34	131.20 / 51.65	13.20 / 5.20	37.00 / 14.57	1.307 / 2.88	3.50 / 7.72	2.50 / 5.51	27 / 1.06 5			4907990 412577	017915 905559	
022 ULTRA 655(A)		153.60 / 60.47	128.80 / 50.71	12.40 / 4.88	37.20 / 14.65	1.480 / 3.26	4.00 / 8.82	3.00 / 6.61	30 / 1.18 5			4907990 412553	017915 906556	
022 P-MAX			131.00 / 51.57	37.00 / 14.57	35.00 / 13.78	0.80 / 1.76	2.00 / 4.41	1.50 / 3.31	21 / 0.83 5	PH-337	QB-337	4907990 404404	017915 303706	
TR	024 ULTRA TR 463M	153.00 / 60.24	126.00 / 49.61	28.30 / 11.14	28.00 / 11.02	1.180 / 2.60	3.00 / 6.61	2.00 / 4.41	24 / 0.94 6	QHD-S4M	QB-42 DIN	4907990 412881	017915 924635	
	024 ULTRA TR 563D	156.30 / 61.54	130.00 / 51.18	30.30 / 11.93	28.80 / 11.34	1.542 / 3.40	3.50 / 7.72	2.50 / 5.51	27 / 1.06 6	QHD-S5D	QB-62 DIN	4907990 412867	017915 925632	
	024 ULTRA TR 663D	156.50 / 61.61	130.50 / 51.38	31.00 / 12.20	29.80 / 11.61	1.793 / 3.95	4.00 / 8.82	3.00 / 6.61	30 / 1.18 6	QHD-S6D	QB-62 DIN	4907990 412843	017915 926639	
VS	026 VS-443D	160.50 / 63.19	140.50 / 55.31	23.50 / 9.25	57.50 / 22.64	1.84 / 4.06	3.50 / 7.72	3.00 / 6.61	23 / 0.91 4	QHD-53D	QB-62 DIN	4907990 369840	017915 634435	
VIDEO SERIES	028 EX-447 VIDEO	155.00 / 61.02	128.50 / 50.59		48.50 / 19.09	1.155 / 2.55	2.00 / 4.41	1.0 / 2.20	20 / 0.79 4	FHD-43M	QB-32	4907990 301468	017915 704473	
	028 EX-547 VIDEO N	160.00 / 62.99	132.80 / 52.28											